



THRESHOLD

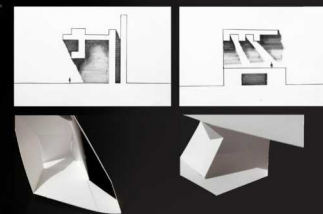
CENALU
<http://cenalu.net/>

The main inspiration of this collection is about threshold. The first time I heard of this word was in my sophomore year in architecture studio class, we were assigned to make architectural drawings to express our interpretation. Later, I understood threshold as a conceptual word that broadly used in architecture as a distinct boundary between two different spaces.

F O R E W O R D

I started doing mass of street photography not long after my sophomore year. Interestingly, when I looked back the photos that have been taken, I found myself was instinctually attracted by certain moments that imply "thresholds".

Most of the selected photos show strong contrast of light and shadow, which create implied spaces. I captured moments when people crossing this condition, transiting into a different space. It was me, who constructed multiple spaces within a completeness. For here, threshold is created because of contrast, while being expressed as contrast, and lastly becomes the condition of contrast.



According to Aristotle, threshold is "wood or stone in such and such a position," (Metaphysics VIII.1043a) - inevitably results in two contradictory images. Then, I questioned about the meaning of this result, the role of threshold that playing in this contradiction.

When I took pictures, I became the one who bring different characters to the threshold, which might link two conditions, but also separate them. I discovered different colors, patterns, and textures, then constructed them into a visual wholeness.

There is no tangible "boundaries", however, there is something tackling, seems appear then disappeared. Without a contradictory, there will be no threshold. Reversely, threshold is a result of its surrounding contexts, so its characteristic is determined by the context, but not me.















T H E A U T H O R



Cena Lu

Born in 1996, Cena is a great young designer of the new generation. Majoring in architecture design (BFA), she graduated from Parsons The New School for Design in New York. During the study, Cena had been as the main photographer and editor of - AO Art Observed™, a global contemporary art events company. She had experience interning at Ping'An Real Estate Co., Ltd. under the department of design. At school, more than one of her architecture studio projects have been permanently archived by the school library. Besides her major of architecture, Cena also has finished multi-discipline courses such as photography, filmmaking and visual communication. In the summer of 2017, Cena held her first individual photography exhibition – Threshold 界 in Guangzhou, China. This exhibition was a great success and rose the interest of local artists and media.

O T H E R C O L L E C T I O N

2016 - CAPRICE

2016 - BRIGHT NIGHT LIGHT

2017 - AT THE EDGE

2017 - SEEING GUANGZHOU

2018 - THE DISTANCE OF BLUE

2018 - THRESHOLD

THRESHOLD

Copyright© 2017 by Cena Lu
Published by Red Publish
First Edition: Aug 2018

Red Publish (Green Forrest)
11/F, 133 Wanchai Road, Wan Chai, Hong Kong
editor@red-publish.com
<http://www.red-publish.com>
ISBN: 978-988-8568-04-8



專業出版 國際銷售
三 互出版文化平台
三 互出版 www.3w.com.cn

Mod·E

Category: Photography

Price: HK\$198